

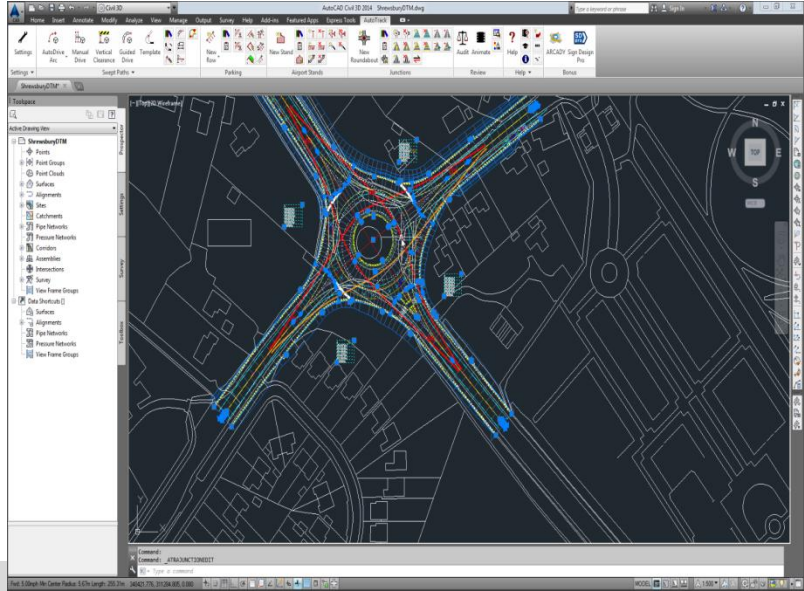


# Regional Centre for Mapping of Resources for Development (RCMRD), Nairobi, Kenya



## CAD Drawings (AutoCAD Civil 3D).

RCMRD is an intergovernmental organization established in 1975 under the auspices of the United Nations, economic commission of Africa (UNECA) and the African Union (AU). It draws its membership from eastern and southern African countries and currently has 20 contracting members. It promotes and builds capacities on land and land related disciplines using the current Geo Information technologies to her member states. For info, please visit [www.rcmrd.org](http://www.rcmrd.org). The training shall be held at RCMRD



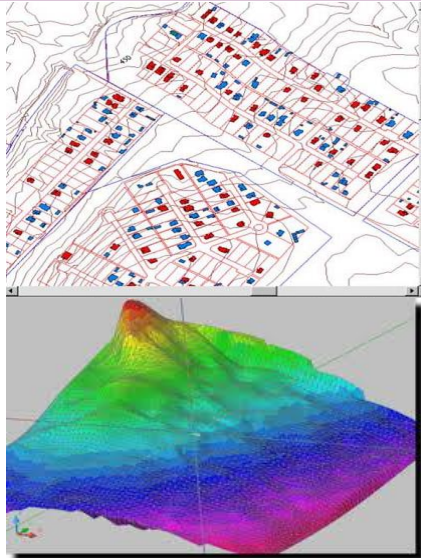
### Target Group

The qualifying participants shall be Land surveyors, Engineers, Architects, Draftsmen, Cartographers, students and other interested individuals.

**Intakes:** 5 Days on 10<sup>th</sup> April, 5<sup>th</sup> June, 14<sup>th</sup> August, 16<sup>th</sup> October and 11<sup>th</sup> December

### Course Objectives

The purpose of the course is to provide knowledge and technical skills in AUTOCAD Drawing using AutoCAD Civil 3D for applications in various applications including cadastral, road and highway designs, building and other structural designs



### Content

- ❖ Understanding AutoCAD Civil 3D Interface.
- ❖ Using Basic Functionality
- ❖ Working with Points
- ❖ Creation of Surface
- ❖ Working with Survey Data.
- ❖ Creating alignment
- ❖ Generation of Profiles
- ❖ Creation of Land Parcels
- ❖ Plan production

**Cost:** USD 250 per head, tuition fee

Accommodation can be arranged from USD 40 bed & breakfast

For applications and more information contact, Muya Kamamia, [muyack@rcmrd.org](mailto:muyack@rcmrd.org)



#### MEMBER STATES:

Botswana, Burundi, Comoros, Ethiopia, Kenya, Lesotho, Malawi, Mauritius, Namibia, Rwanda, Seychelles, Somali, South Africa, South Sudan, Sudan, Swaziland, Tanzania, Uganda, Zambia & Zimbabwe.

P.O. Box 632-00618 Roysambu Kasarani, Nairobi Kenya ■ Phone: +254 020 2680748/2680722  
Mobile: +254 723 786161 ■ Fax: +254 020 2680747 ■ Email: [rcmrd@rcmrd.org](mailto:rcmrd@rcmrd.org) ■ [www.rcmrd.org](http://www.rcmrd.org)